



Location: CMA1b - Oil Street Site Office

Report on 24-hour TSP monitoring

Action Level ( $\mu\text{g}/\text{m}^3$ ) - 176.7

Limit Level ( $\mu\text{g}/\text{m}^3$ ) - 260

Date	Sampling Time	Weather Condition	Filter paper no.	Filter Weight, g		Elapse Time, hr		Sampling Time, hr	Flow Rate, $\text{m}^3/\text{min}$			Total Volume, $\text{m}^3$	TSP Level, $\mu\text{g}/\text{m}^3$
				Initial	Final	Initial	Final		Initial, $Q_{si}$	Final, $Q_{sf}$	Average		
2-Dec-15	8:00	Cloudy	013881	2.8101	3.1082	7330.07	7354.07	24.00	1.27	1.28	1.27	1834	162.6
8-Dec-15	8:00	Cloudy	013987	2.8233	3.0409	7357.08	7381.08	24.00	1.28	1.28	1.28	1844	118.0
14-Dec-15	8:00	Cloudy	012443	2.8252	3.0146	7384.10	7408.10	24.00	1.28	1.28	1.28	1841	102.9
18-Dec-15	8:00	Fine	014176	2.8113	3.0920	7411.11	7435.11	24.00	1.29	1.29	1.29	1856	151.2
23-Dec-15	8:00	Cloudy	014057	2.8690	3.1845	7438.11	7462.11	24.00	1.27	1.27	1.27	1834	172.0

Report on 1-hour TSP monitoring

Action Level ( $\mu\text{g}/\text{m}^3$ ) - 320.1

Limit Level ( $\mu\text{g}/\text{m}^3$ ) - 500

Date	Sampling Time	Weather Condition	Filter paper no.	Filter Weight, g		Elapse Time, hr		Sampling Time, hr	Flow Rate, $\text{m}^3/\text{min}$			Total Volume, $\text{m}^3$	TSP Level, $\mu\text{g}/\text{m}^3$
				Initial	Final	Initial	Final		Initial, $Q_{si}$	Final, $Q_{sf}$	Average		
3-Dec-15	8:03	Cloudy	013998	2.8346	2.8431	7354.07	7355.07	1.00	1.28	1.28	1.28	77	111.1
3-Dec-15	9:07	Cloudy	013993	2.8415	2.8511	7355.07	7356.07	1.00	1.28	1.28	1.28	77	125.4
3-Dec-15	10:25	Cloudy	013990	2.8160	2.8259	7356.07	7357.07	1.00	1.28	1.28	1.28	77	129.4
9-Dec-15	8:03	Rainy	013982	2.8309	2.8400	7381.08	7382.08	1.00	1.28	1.28	1.28	77	118.5
9-Dec-15	9:35	Rainy	013978	2.8396	2.8488	7382.09	7383.09	1.00	1.28	1.28	1.28	77	119.8
9-Dec-15	11:00	Rainy	013975	2.8385	2.8477	7383.10	7384.10	1.00	1.28	1.28	1.28	77	119.8
15-Dec-15	8:06	Cloudy	013803	2.7996	2.8073	7408.10	7409.10	1.00	1.28	1.28	1.28	77	100.2
15-Dec-15	10:00	Cloudy	013800	2.7971	2.8062	7409.11	7410.11	1.00	1.28	1.28	1.28	77	118.4
15-Dec-15	13:00	Cloudy	014181	2.8347	2.8450	7410.11	7411.11	1.00	1.28	1.28	1.28	77	134.1
19-Dec-15	8:30	Fine	014172	2.8052	2.8163	7435.11	7436.11	1.00	1.29	1.29	1.29	77	143.7
19-Dec-15	9:40	Fine	014169	2.8181	2.8292	7436.11	7437.11	1.00	1.29	1.29	1.29	77	143.7
19-Dec-15	13:00	Fine	013623	2.8043	2.8151	7437.11	7438.11	1.00	1.29	1.29	1.29	77	139.8
24-Dec-15	8:05	Cloudy	014273	2.8968	2.9090	7462.11	7463.11	1.00	1.27	1.27	1.27	76	159.8
24-Dec-15	9:18	Cloudy	014104	2.8693	2.8808	7463.11	7464.11	1.00	1.27	1.27	1.27	76	150.6
24-Dec-15	10:29	Cloudy	014101	2.8922	2.9045	7464.11	7465.11	1.00	1.27	1.27	1.27	76	161.1



Location: CMA2a - Causeway Bay Community Centre

Report on 24-hour TSP monitoring

Action Level ( $\mu\text{g}/\text{m}^3$ ) - 169.5

Limit Level ( $\mu\text{g}/\text{m}^3$ ) - 260

Date	Sampling Time	Weather Condition	Filter paper no.	Filter Weight, g		Elapse Time, hr		Sampling Time, hr	Flow Rate, $\text{m}^3/\text{min}$			Total Volume, $\text{m}^3$	TSP Level, $\mu\text{g}/\text{m}^3$
				Initial	Final	Initial	Final		Initial, $Q_{si}$	Final, $Q_{sf}$	Average		
2-Dec-15	8:00	Cloudy	014002	2.8340	3.0494	16980.01	17004.01	24.00	1.22	1.22	1.22	1760	122.4
8-Dec-15	8:00	Cloudy	013838	2.8186	2.9782	17007.01	17031.01	24.00	1.23	1.23	1.23	1772	90.1
14-Dec-15	8:00	Cloudy	012441	2.8359	2.9214	17034.02	17058.02	24.00	1.11	1.12	1.12	1607	53.2
18-Dec-15	8:00	Fine	014208	2.8128	2.9332	17061.02	17085.02	24.00	1.13	1.12	1.13	1622	74.2
23-Dec-15	8:00	Cloudy	014217	2.8992	3.0877	17088.02	17112.02	24.00	1.22	1.22	1.22	1761	107.0

Report on 1-hour TSP monitoring

Action Level ( $\mu\text{g}/\text{m}^3$ ) - 323.4

Limit Level ( $\mu\text{g}/\text{m}^3$ ) - 500

Date	Sampling Time	Weather Condition	Filter paper no.	Filter Weight, g		Elapse Time, hr		Sampling Time, hr	Flow Rate, $\text{m}^3/\text{min}$			Total Volume, $\text{m}^3$	TSP Level, $\mu\text{g}/\text{m}^3$
				Initial	Final	Initial	Final		Initial, $Q_{si}$	Final, $Q_{sf}$	Average		
3-Dec-15	8:05	Cloudy	014003	2.8302	2.8358	17004.01	17005.01	1.00	1.22	1.22	1.22	73	76.2
3-Dec-15	9:19	Cloudy	013889	2.7999	2.8074	17005.01	17006.01	1.00	1.17	1.17	1.17	70	106.9
3-Dec-15	10:25	Cloudy	013842	2.8303	2.8402	17006.01	17007.01	1.00	1.22	1.22	1.22	73	134.7
9-Dec-15	8:05	Rainy	013983	2.8290	2.8356	17031.01	17032.01	1.00	1.23	1.23	1.23	74	89.5
9-Dec-15	9:24	Rainy	013828	2.8026	2.8099	17032.01	17033.01	1.00	1.23	1.23	1.23	74	99.0
9-Dec-15	10:53	Rainy	013832	2.8072	2.8148	17033.01	17034.01	1.00	1.23	1.23	1.23	74	103.0
15-Dec-15	8:30	Cloudy	013802	2.7994	2.8051	17058.02	17059.02	1.00	1.12	1.12	1.12	67	85.0
15-Dec-15	10:11	Cloudy	014199	2.8242	2.8304	17059.02	17060.02	1.00	1.12	1.12	1.12	67	92.4
15-Dec-15	13:00	Cloudy	014203	2.8285	2.8351	17060.02	17061.02	1.00	1.12	1.12	1.12	67	98.4
19-Dec-15	8:26	Fine	014183	2.8153	2.8244	17085.02	17086.02	1.00	1.24	1.24	1.24	74	122.5
19-Dec-15	9:37	Fine	014118	2.7981	2.8079	17086.02	17087.02	1.00	1.24	1.24	1.24	74	132.0
19-Dec-15	10:43	Fine	014114	2.8830	2.8937	17087.02	17088.02	1.00	1.24	1.24	1.24	74	144.1
24-Dec-15	8:05	Cloudy	014274	2.8653	2.8770	17112.02	17113.02	1.00	1.22	1.22	1.22	73	159.6
24-Dec-15	9:10	Cloudy	014269	2.8634	2.8729	17113.02	17114.02	1.00	1.22	1.22	1.22	73	129.6
24-Dec-15	10:15	Cloudy	014265	2.8732	2.8783	17114.02	17115.02	1.00	1.22	1.22	1.22	73	69.6



Location: CMA3a - CWB PRE Site Office Area

Report on 24-hour TSP monitoring

Action Level ( $\mu\text{g}/\text{m}^3$ ) - 171

Limit Level ( $\mu\text{g}/\text{m}^3$ ) - 260

Date	Sampling Time	Weather Condition	Filter paper no.	Filter Weight, g		Elapse Time, hr		Sampling Time, hr	Flow Rate, $\text{m}^3/\text{min}$			Total Volume, $\text{m}^3$	TSP Level, $\mu\text{g}/\text{m}^3$
				Initial	Final	Initial	Final		Initial, $Q_{si}$	Final, $Q_{sf}$	Average		
2-Dec-15	8:00	Cloudy	013877	2.8016	2.9747	4472.13	4496.13	24.00	1.26	1.27	1.26	1820	95.1
8-Dec-15	8:00	Cloudy	013986	2.8330	2.9714	4499.14	4523.14	24.00	1.27	1.27	1.27	1831	75.6
14-Dec-15	8:00	Cloudy	012442	2.8321	2.9429	4526.15	4550.15	24.00	1.22	1.22	1.22	1755	63.1
18-Dec-15	8:00	Fine	014175	2.8176	2.9965	4553.15	4577.15	24.00	1.33	1.33	1.33	1915	93.4
23-Dec-15	8:00	Cloudy	014058	2.8752	3.0630	4580.15	4604.15	24.00	1.32	1.31	1.31	1894	99.2

Report on 1-hour TSP monitoring

Action Level ( $\mu\text{g}/\text{m}^3$ ) - 311.3

Limit Level ( $\mu\text{g}/\text{m}^3$ ) - 500

Date	Sampling Time	Weather Condition	Filter paper no.	Filter Weight, g		Elapse Time, hr		Sampling Time, hr	Flow Rate, $\text{m}^3/\text{min}$			Total Volume, $\text{m}^3$	TSP Level, $\mu\text{g}/\text{m}^3$
				Initial	Final	Initial	Final		Initial, $Q_{si}$	Final, $Q_{sf}$	Average		
3-Dec-15	8:09	Cloudy	013995	2.8195	2.8267	4496.13	4497.13	1.00	1.18	1.18	1.18	71	101.9
3-Dec-15	9:35	Cloudy	013992	2.8306	2.8392	4497.13	4498.13	1.00	1.18	1.18	1.18	71	121.7
3-Dec-15	10:45	Cloudy	013989	2.8455	2.8524	4498.13	4499.13	1.00	1.18	1.18	1.18	71	97.7
9-Dec-15	8:30	Rainy	013980	2.8189	2.8242	4523.14	4524.14	1.00	1.18	1.18	1.18	71	74.7
9-Dec-15	10:00	Rainy	013977	2.8401	2.8500	4524.15	4525.15	1.00	1.18	1.18	1.18	71	139.6
9-Dec-15	13:00	Rainy	013974	2.8305	2.8379	4525.15	4526.15	1.00	1.18	1.18	1.18	71	104.3
15-Dec-15	10:49	Cloudy	014201	2.8330	2.8392	4550.15	4551.15	1.00	1.24	1.24	1.24	74	83.2
15-Dec-15	13:00	Cloudy	014180	2.8227	2.8296	4551.15	4552.15	1.00	1.24	1.24	1.24	74	92.6
15-Dec-15	14:18	Cloudy	014177	2.8244	2.8311	4552.15	4553.15	1.00	1.12	1.12	1.12	67	99.3
19-Dec-15	8:50	Fine	014171	2.7970	2.8056	4577.15	4578.15	1.00	1.25	1.25	1.25	75	114.8
19-Dec-15	10:00	Fine	014168	2.8192	2.8272	4578.15	4579.15	1.00	1.25	1.25	1.25	75	106.7
19-Dec-15	13:00	Fine	013622	2.8101	2.8213	4579.15	4580.15	1.00	1.25	1.25	1.25	75	149.4
24-Dec-15	8:45	Cloudy	014271	2.8895	2.9000	4604.15	4605.15	1.00	1.17	1.17	1.17	70	149.0
24-Dec-15	9:48	Cloudy	014103	2.8735	2.8816	4605.15	4606.15	1.00	1.23	1.23	1.23	74	109.5
24-Dec-15	10:52	Cloudy	014100	2.8751	2.8880	4606.15	4607.15	1.00	1.23	1.23	1.23	74	174.4



Location: CMA4a - SPCA

Report on 24-hour TSP monitoring

Action Level ( $\mu\text{g}/\text{m}^3$ ) - 171.2  
Limit Level ( $\mu\text{g}/\text{m}^3$ ) - 260

Date	Sampling Time	Weather Condition	Filter paper no.	Filter Weight, g		Elapse Time, hr		Sampling Time, hr	Flow Rate, $\text{m}^3/\text{min}$			Total Volume, $\text{m}^3$	TSP Level, $\mu\text{g}/\text{m}^3$
				Initial	Final	Initial	Final		Initial, $Q_{si}$	Final, $Q_{sf}$	Average		
2-Dec-15	8:00	Cloudy	013882	2.8057	3.0262	21256.97	21280.97	24.00	1.31	1.32	1.31	1893	116.5
8-Dec-15	8:00	Cloudy	013837	2.7988	2.9759	21283.98	21307.98	24.00	1.32	1.32	1.32	1903	93.0
14-Dec-15	8:00	Cloudy	012440	2.8313	2.9857	21310.99	21334.99	24.00	1.32	1.32	1.32	1900	81.3
18-Dec-15	8:00	Fine	013849	2.8358	3.0596	21338.00	21362.00	24.00	1.33	1.33	1.33	1915	116.8
23-Dec-15	8:00	Cloudy	014218	2.8836	3.1426	21365.00	21389.00	24.00	1.32	1.31	1.31	1894	136.8

Report on 1-hour TSP monitoring

Action Level ( $\mu\text{g}/\text{m}^3$ ) - 312.5  
Limit Level ( $\mu\text{g}/\text{m}^3$ ) - 500

Date	Sampling Time	Weather Condition	Filter paper no.	Filter Weight, g		Elapse Time, hr		Sampling Time, hr	Flow Rate, $\text{m}^3/\text{min}$			Total Volume, $\text{m}^3$	TSP Level, $\mu\text{g}/\text{m}^3$
				Initial	Final	Initial	Final		Initial, $Q_{si}$	Final, $Q_{sf}$	Average		
3-Dec-15	8:05	Cloudy	013997	2.8169	2.8255	21280.98	21281.98	1.00	1.32	1.32	1.32	79	108.9
3-Dec-15	9:41	Cloudy	013845	2.8296	2.8390	21281.98	21282.98	1.00	1.32	1.32	1.32	79	119.0
3-Dec-15	10:44	Cloudy	013841	2.8275	2.8363	21282.98	21283.98	1.00	1.32	1.32	1.32	79	111.4
9-Dec-15	8:30	Rainy	013981	2.8083	2.8182	21307.99	21308.99	1.00	1.32	1.32	1.32	79	124.9
9-Dec-15	10:00	Rainy	013829	2.8063	2.8161	21308.99	21309.99	1.00	1.32	1.32	1.32	79	123.7
9-Dec-15	13:00	Rainy	013833	2.8016	2.8102	21309.99	21310.99	1.00	1.32	1.32	1.32	79	108.5
15-Dec-15	10:38	Cloudy	014200	2.8152	2.8225	21334.99	21335.99	1.00	1.32	1.32	1.32	79	92.1
15-Dec-15	13:00	Cloudy	014204	2.8274	2.8366	21335.99	21336.99	1.00	1.32	1.32	1.32	79	116.0
15-Dec-15	14:04	Cloudy	014206	2.8314	2.8407	21337.00	21338.00	1.00	1.32	1.32	1.32	79	117.3
19-Dec-15	8:49	Fine	013821	2.8029	2.8182	21362.00	21363.00	1.00	1.33	1.33	1.33	80	192.0
19-Dec-15	9:57	Fine	014117	2.8062	2.8175	21363.00	21364.00	1.00	1.33	1.33	1.33	80	141.8
19-Dec-15	13:00	Fine	014113	2.8978	2.9090	21364.00	21365.00	1.00	1.33	1.33	1.33	80	140.6
24-Dec-15	8:30	Cloudy	014272	2.8818	2.8919	21389.00	21390.00	1.00	1.31	1.31	1.31	79	128.1
24-Dec-15	9:33	Cloudy	014268	2.8741	2.8856	21390.00	21391.00	1.00	1.31	1.31	1.31	79	145.9
24-Dec-15	10:45	Cloudy	014264	2.8794	2.8901	21391.00	21392.00	1.00	1.31	1.31	1.31	79	135.7



Location: CMA5b - Pedestrian Plaza

Report on 24-hour TSP monitoring

Action Level ( $\mu\text{g}/\text{m}^3$ ) - 181

Limit Level ( $\mu\text{g}/\text{m}^3$ ) - 260

Date	Sampling Time	Weather Condition	Filter paper no.	Filter Weight, g		Elapse Time, hr		Sampling Time, hr	Flow Rate, $\text{m}^3/\text{min}$			Total Volume, $\text{m}^3$	TSP Level, $\mu\text{g}/\text{m}^3$
				Initial	Final	Initial	Final		Initial, $Q_{si}$	Final, $Q_{sf}$	Average		
3-Dec-15	11:58	Cloudy	013836	2.8100	2.9518	5789.99	5813.99	24.00	0.73	0.73	0.73	1054	134.5
8-Dec-15	8:00	Cloudy	013996	2.8359	2.9101	5813.99	5837.99	24.00	0.74	0.74	0.74	1061	69.9
14-Dec-15	8:00	Cloudy	013973	2.8487	2.9772	5841.02	5865.02	24.00	0.73	0.74	0.73	1057	121.6
18-Dec-15	8:00	Fine	014209	2.8304	3.0206	5868.03	5892.03	24.00	0.75	0.74	0.75	1075	176.9
23-Dec-15	8:00	Cloudy	012444	2.8262	3.0139	5895.03	5919.03	24.00	0.73	0.73	0.73	1049	178.9

Remarks: Due to interruption of electricity supply, the 24hr TSP was rescheduled from 2 December 2015 to 3 December 2015.

Report on 1-hour TSP monitoring

Action Level ( $\mu\text{g}/\text{m}^3$ ) - 332

Limit Level ( $\mu\text{g}/\text{m}^3$ ) - 500

Date	Sampling Time	Weather Condition	Filter paper no.	Filter Weight, g		Elapse Time, hr		Sampling Time, hr	Flow Rate, $\text{m}^3/\text{min}$			Total Volume, $\text{m}^3$	TSP Level, $\mu\text{g}/\text{m}^3$
				Initial	Final	Initial	Final		Initial, $Q_{si}$	Final, $Q_{sf}$	Average		
3-Dec-15	8:25	Cloudy	013994	2.8308	2.8381	5786.98	5787.98	1.00	0.73	0.73	0.73	44	166.6
3-Dec-15	9:50	Cloudy	013844	2.8170	2.8258	5787.98	5788.98	1.00	0.73	0.73	0.73	44	200.8
3-Dec-15	10:55	Cloudy	013840	2.8341	2.8451	5788.98	5789.98	1.00	0.73	0.73	0.73	44	251.0
9-Dec-15	8:45	Rainy	013979	2.8290	2.8374	5837.99	5838.99	1.00	0.74	0.74	0.74	44	190.4
9-Dec-15	10:19	Rainy	013830	2.8173	2.8247	5839.02	5840.02	1.00	0.74	0.74	0.74	44	167.8
9-Dec-15	13:15	Rainy	013834	2.7957	2.8050	5840.02	5841.02	1.00	0.74	0.74	0.74	44	210.8
15-Dec-15	8:45	Cloudy	013801	2.7988	2.8058	5865.02	5866.02	1.00	0.74	0.74	0.74	44	158.4
15-Dec-15	10:55	Cloudy	014182	2.8190	2.8265	5866.03	5867.03	1.00	0.74	0.74	0.74	44	169.7
15-Dec-15	13:00	Cloudy	014205	2.8143	2.8210	5867.03	5868.03	1.00	0.74	0.74	0.74	44	151.6
19-Dec-15	9:05	Fine	013822	2.7932	2.8016	5892.03	5893.03	1.00	0.74	0.74	0.74	45	188.1
19-Dec-15	10:14	Fine	014116	2.8404	2.8491	5893.03	5894.03	1.00	0.74	0.74	0.74	45	194.8
19-Dec-15	13:00	Fine	014112	2.9012	2.9100	5894.03	5895.03	1.00	0.74	0.74	0.74	45	197.1
24-Dec-15	8:50	Cloudy	014270	2.8795	2.8888	5919.03	5920.03	1.00	0.73	0.73	0.73	44	213.2
24-Dec-15	9:53	Cloudy	014267	2.8836	2.8951	5920.03	5921.03	1.00	0.79	0.79	0.79	48	241.4
24-Dec-15	10:56	Cloudy	014263	2.8928	2.9042	5921.03	5922.03	1.00	0.79	0.79	0.79	48	239.3



Location: CMA6a - WD2 PRE Office

Report on 24-hour TSP monitoring

Action Level - 187.3  $\mu\text{g}/\text{m}^3$   
Limit Level - 260  $\mu\text{g}/\text{m}^3$

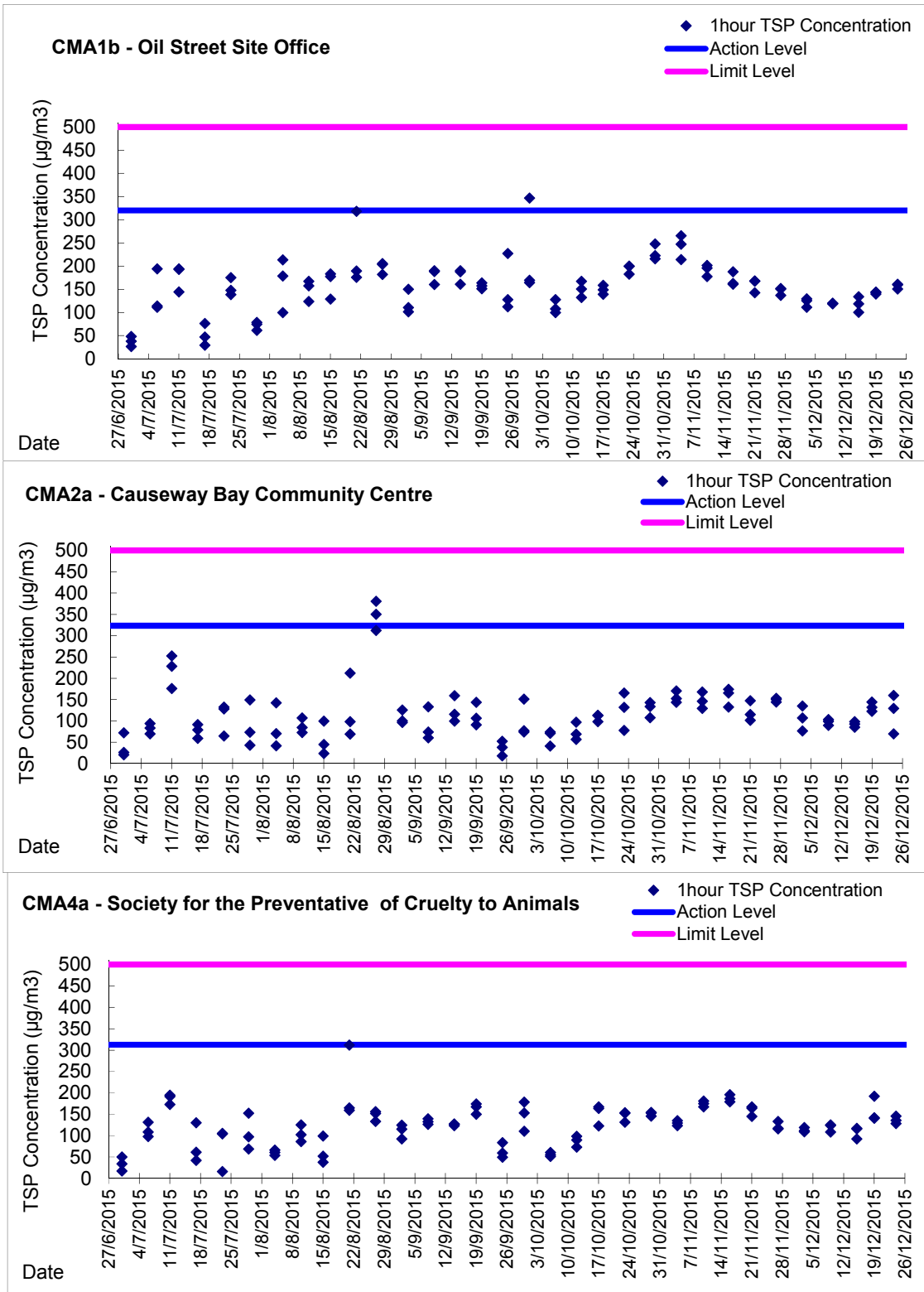
Date	Sampling Time	Weather Condition	Filter paper no.	Filter Weight, g		Elapse Time, hr		Sampling Time, hr	Flow Rate, $\text{m}^3/\text{min}$			Total Volume, $\text{m}^3$	TSP Level, $\mu\text{g}/\text{m}^3$
				Initial	Final	Initial	Final		Initial, $Q_{si}$	Final, $Q_{sf}$	Average		
2-Dec-15	8:00	Cloudy	014000	2.8208	3.0472	20837.28	20861.28	24.00	1.19	1.20	1.20	1721	131.5
8-Dec-15	8:00	Cloudy	013985	2.8416	3.0481	20864.29	20888.29	24.00	1.21	1.20	1.20	1735	119.0
14-Dec-15	8:00	Cloudy	013806	2.8040	3.0050	20891.29	20915.29	24.00	1.20	1.20	1.20	1730	116.2
18-Dec-15	8:00	Fine	014174	2.8263	3.0685	20918.29	20942.29	24.00	1.22	1.21	1.21	1749	138.5
23-Dec-15	8:00	Cloudy	014109	2.8854	3.1455	20945.29	20969.29	24.00	1.20	1.19	1.20	1722	151.0

Report on 1-hour TSP monitoring

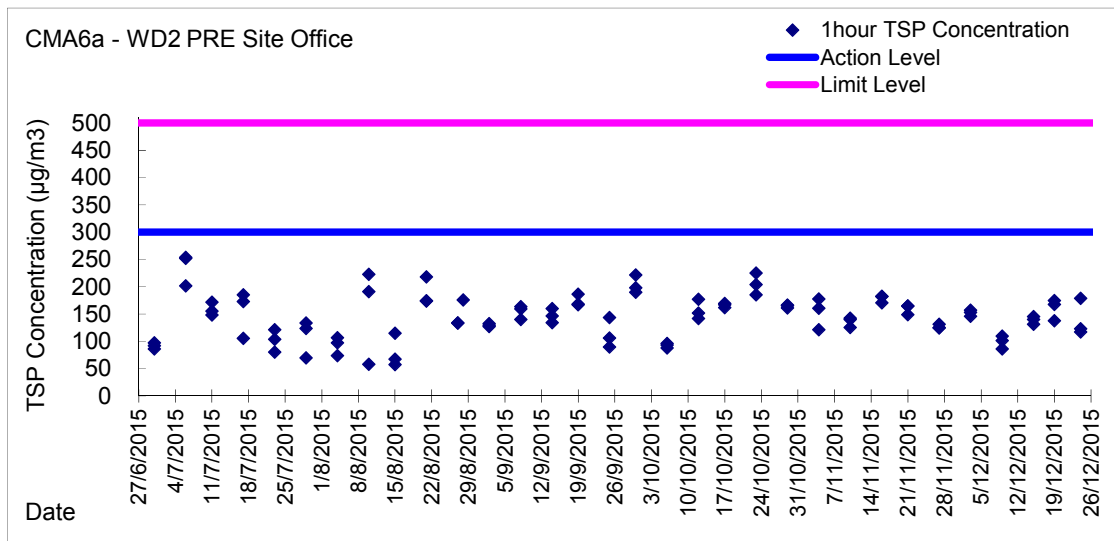
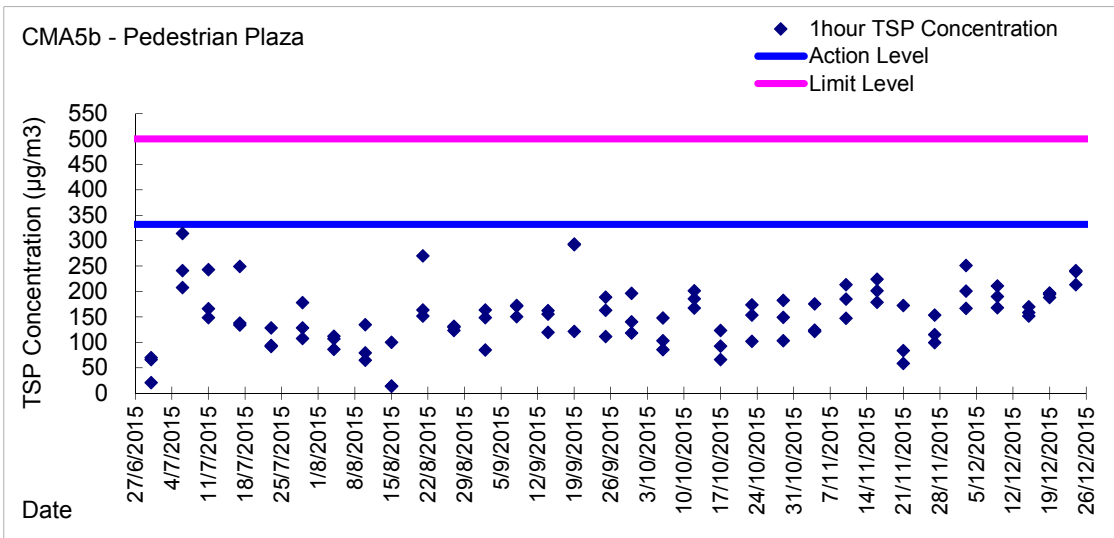
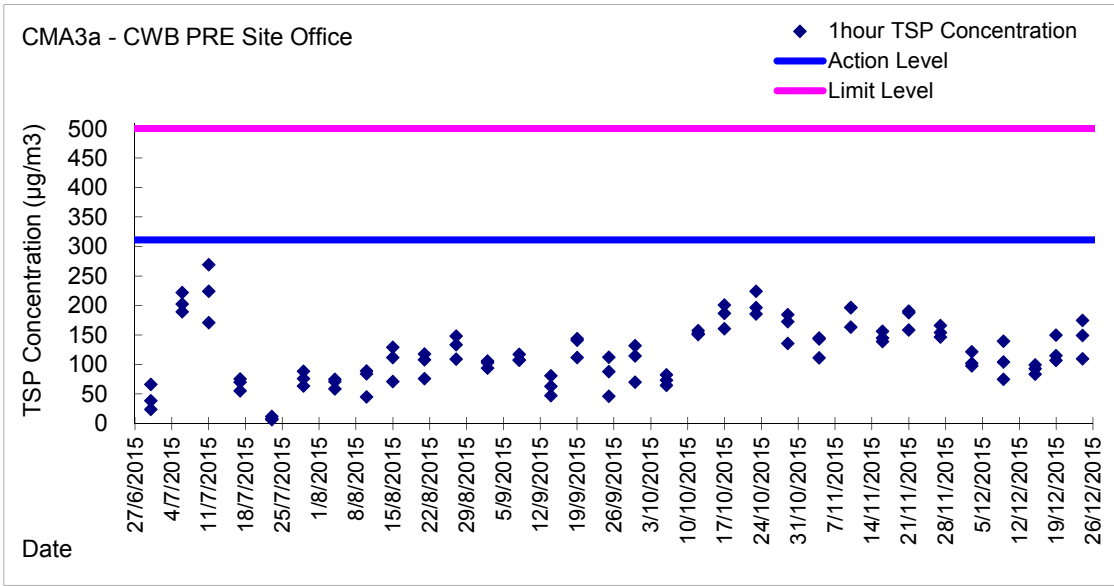
Action Level - 300.1  $\mu\text{g}/\text{m}^3$   
Limit Level - 500  $\mu\text{g}/\text{m}^3$

Date	Sampling Time	Weather Condition	Filter paper no.	Filter Weight, g		Elapse Time, hr		Sampling Time, hr	Flow Rate, $\text{m}^3/\text{min}$			Total Volume, $\text{m}^3$	TSP Level, $\mu\text{g}/\text{m}^3$
				Initial	Final	Initial	Final		Initial, $Q_{si}$	Final, $Q_{sf}$	Average		
3-Dec-15	8:33	Cloudy	013887	2.8103	2.8216	20861.28	20862.28	1.00	1.20	1.20	1.20	72	157.2
3-Dec-15	9:55	Cloudy	013991	2.8184	2.8294	20862.29	20863.29	1.00	1.20	1.20	1.20	72	153.0
3-Dec-15	11:00	Cloudy	013988	2.8348	2.8453	20863.29	20864.29	1.00	1.20	1.20	1.20	72	146.1
9-Dec-15	8:42	Rainy	013826	2.8063	2.8142	20888.29	20889.29	1.00	1.20	1.20	1.20	72	109.4
9-Dec-15	10:30	Rainy	013976	2.8370	2.8432	20889.29	20890.29	1.00	1.20	1.20	1.20	72	85.9
9-Dec-15	13:00	Rainy	013819	2.8167	2.8240	20890.29	20891.29	1.00	1.20	1.20	1.20	72	101.1
15-Dec-15	9:02	Cloudy	014196	2.8235	2.8340	20915.29	20916.29	1.00	1.20	1.20	1.20	72	145.3
15-Dec-15	10:40	Cloudy	013798	2.8074	2.8169	20916.29	20917.29	1.00	1.20	1.20	1.20	72	131.5
15-Dec-15	13:00	Cloudy	014179	2.8172	2.8273	20917.29	20918.29	1.00	1.20	1.20	1.20	72	139.8
19-Dec-15	9:15	Fine	014170	2.8072	2.8172	20942.29	20943.29	1.00	1.21	1.21	1.21	73	137.5
19-Dec-15	10:20	Fine	013624	2.7756	2.7883	20943.29	20944.29	1.00	1.21	1.21	1.21	73	174.6
19-Dec-15	13:00	Fine	013621	2.8147	2.8269	20944.29	20945.29	1.00	1.21	1.21	1.21	73	167.7
24-Dec-15	8:39	Cloudy	014106	2.8984	2.9112	20969.29	20970.29	1.00	1.19	1.19	1.19	72	178.6
24-Dec-15	9:50	Cloudy	014102	2.8909	2.8993	20970.29	20971.29	1.00	1.19	1.19	1.19	72	117.2
24-Dec-15	13:00	Cloudy	014099	2.8767	2.8855	20971.29	20972.29	1.00	1.19	1.19	1.19	72	122.8

Graphic Presentation of 1 hour TSP Result



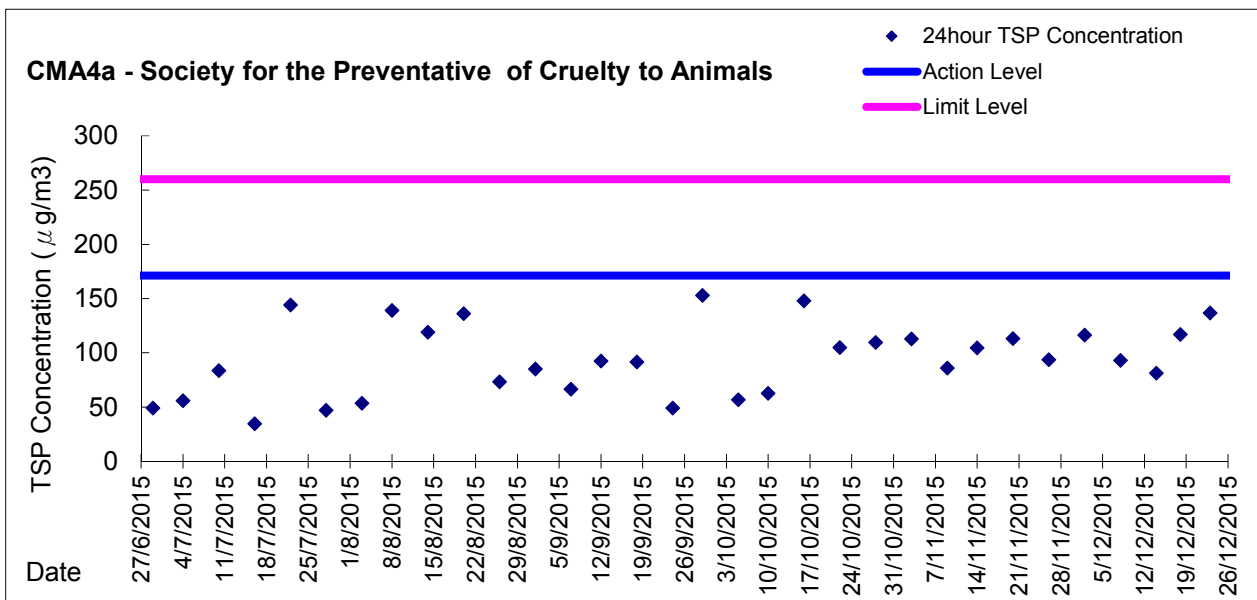
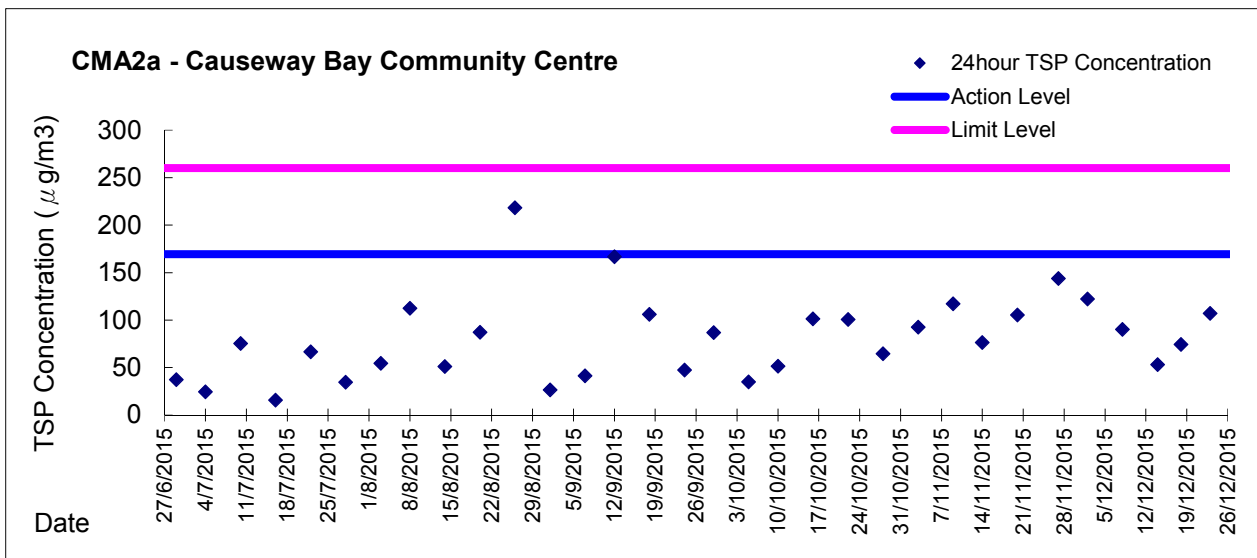
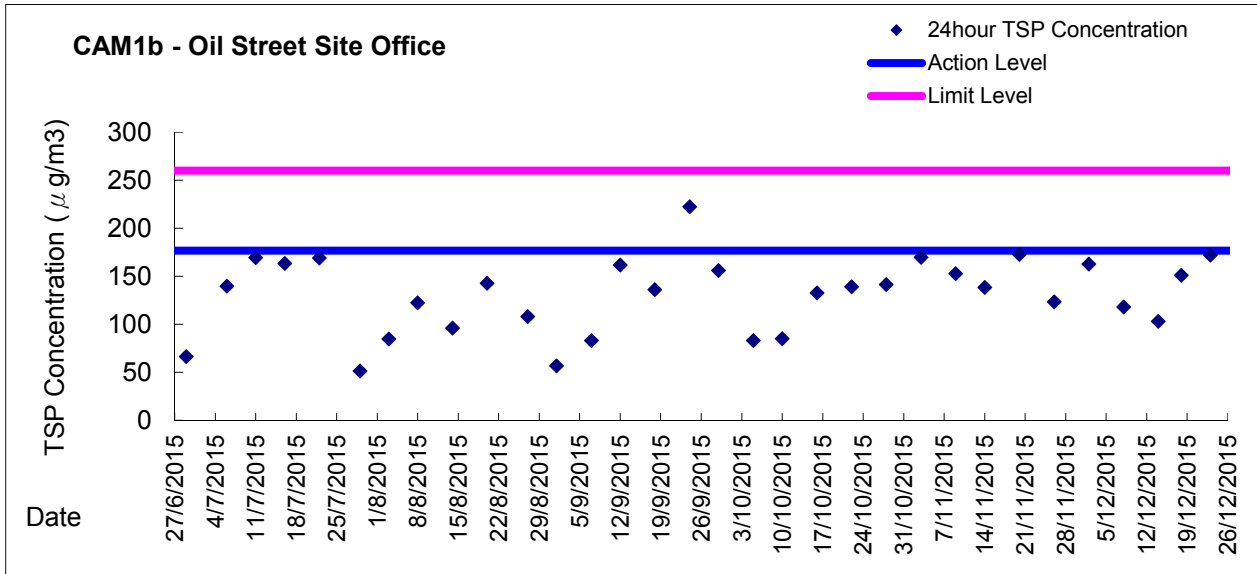
Graphic Presentation of 1 hour TSP Result







Graphic Presentation of 24 hour TSP Result





Graphic Presentation of 24 hour TSP Result

